

# Institute for Technology and artistic Design ITD Ltd.



## *Portfolio*

Institute for Technology and artistic Design  
Nördliche Ringstraße 19, 85057 Ingolstadt, Germany

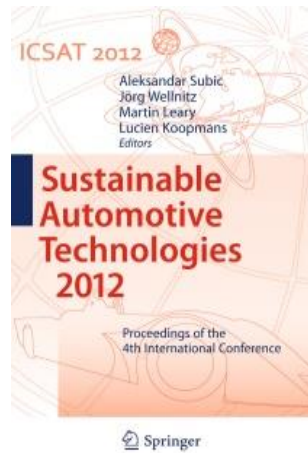
Managing director: Prof. Dr.-Ing. Prof. h.c. Jörg Wellnitz

Phone: +49 841 9517443

E-Mail: sekretariat@itd-in.de

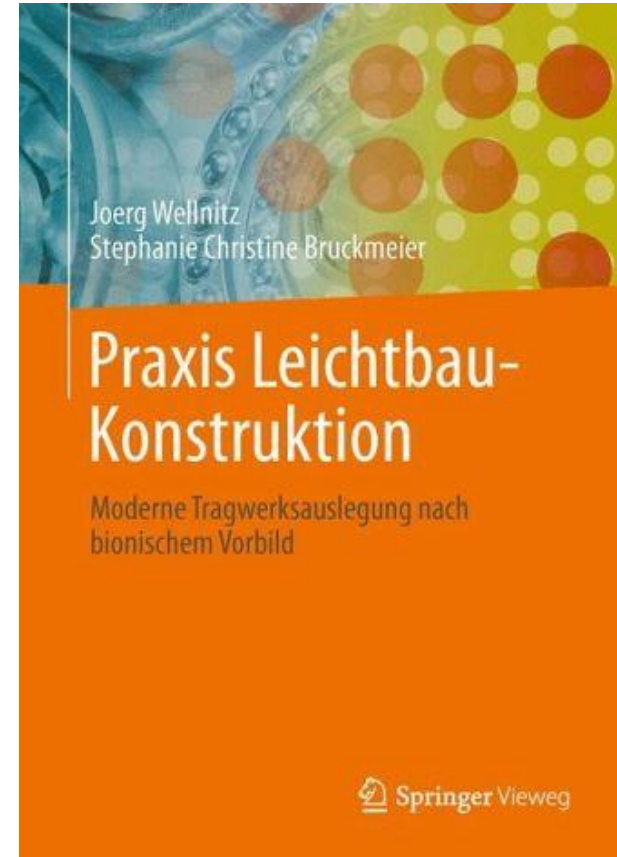
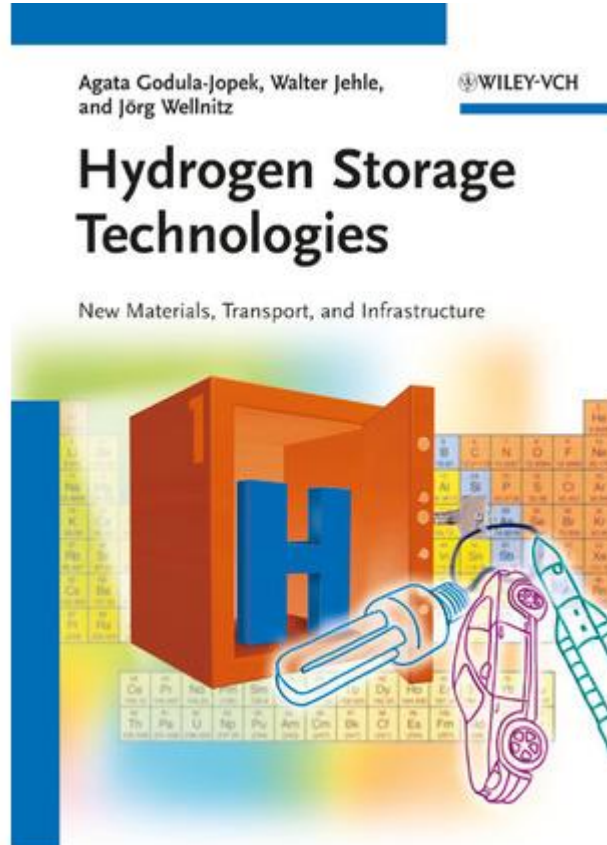
[www.itd-in.de](http://www.itd-in.de)

# ICSAT Conferences

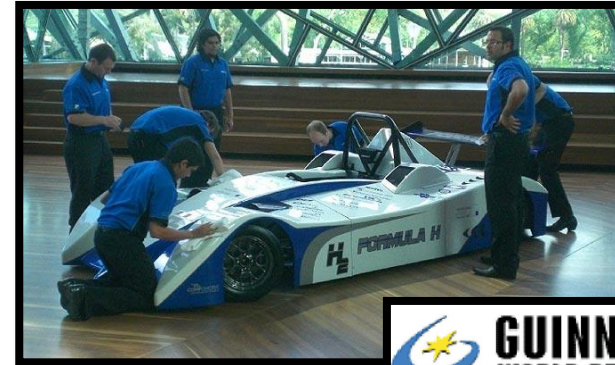


<http://www.icsat2013.com/>

# Publications



# Formula H



- First developed and the fastest vehicle driven by hydrogen combustion engine
- Design of Exterior and Interior

## FORMULA H

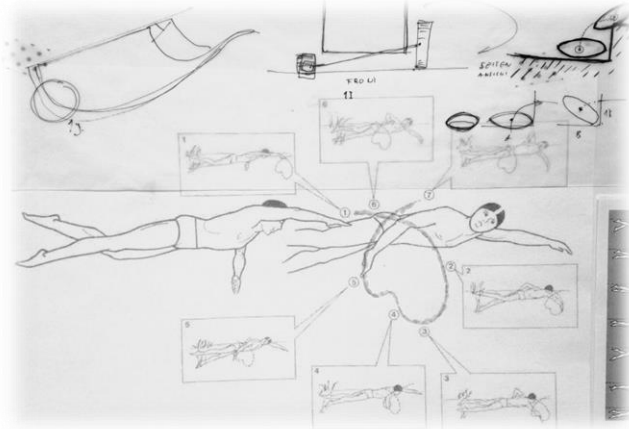
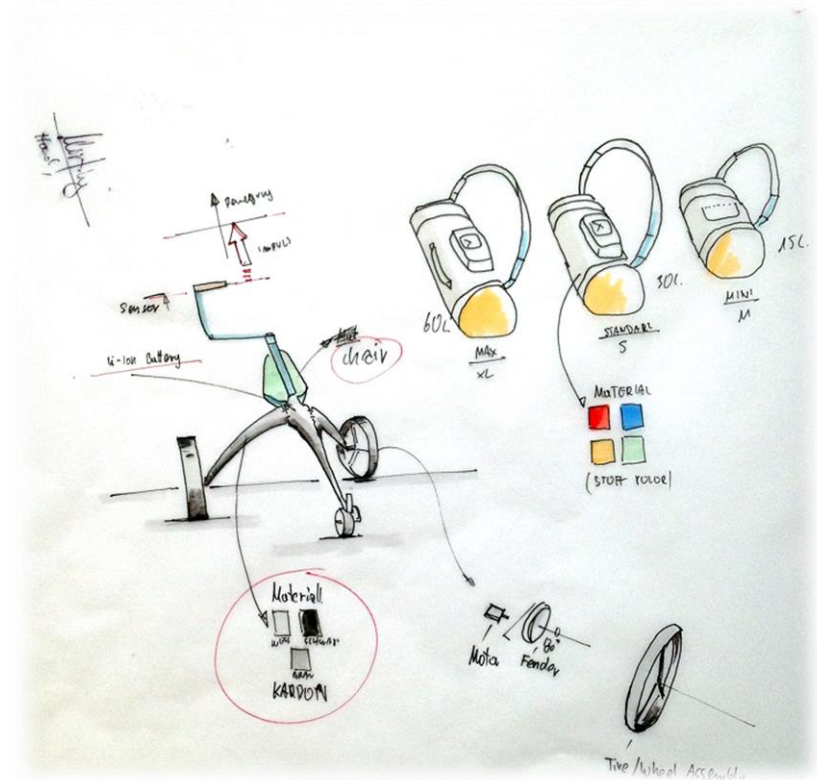
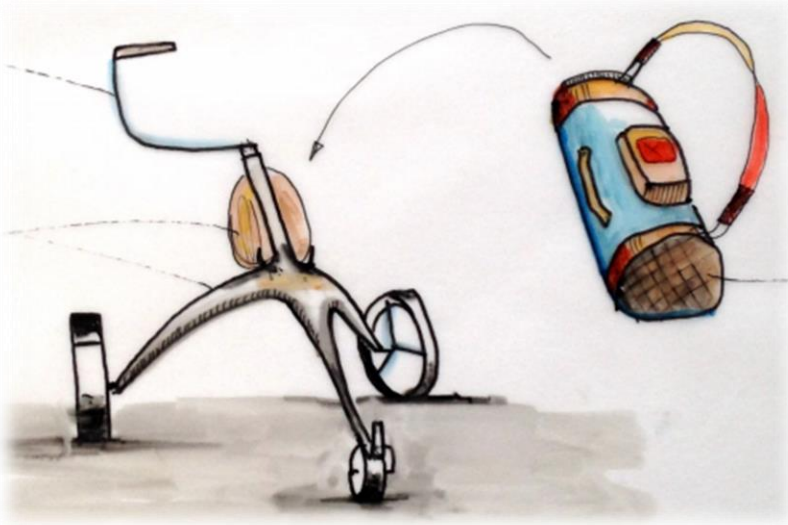
# Formula H



# Redesign of Walkers



## Design-work for Shopping-Walkers

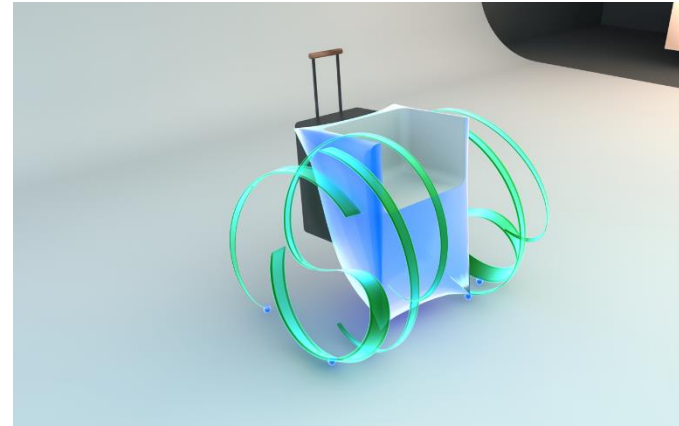
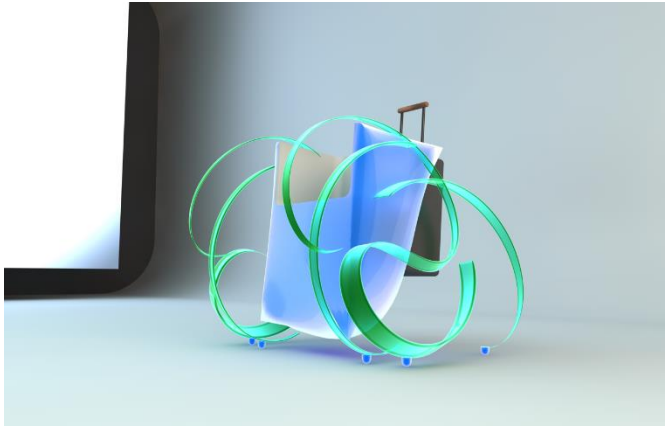


Customer: Firma Topro,  
market leader of Europa

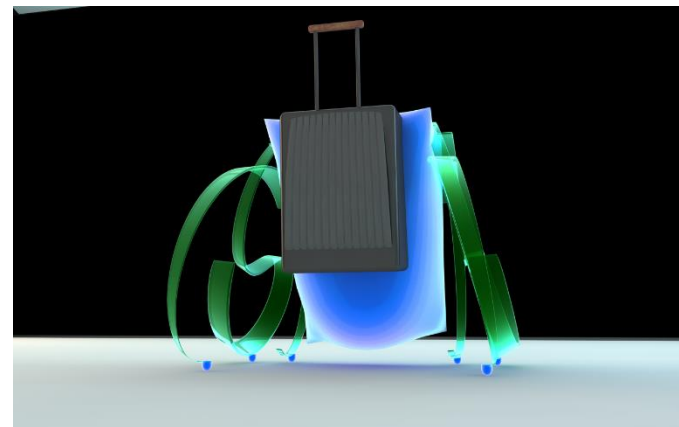
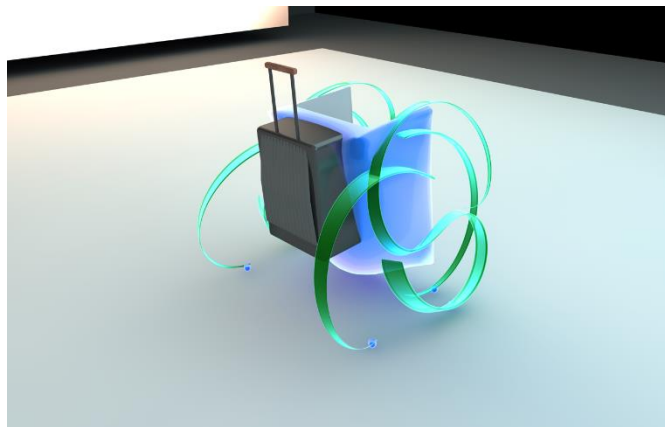
# Project Locomotion



## Design-work for Walking and Sitting support



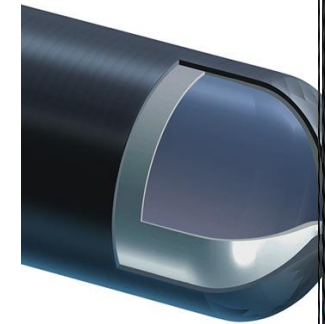
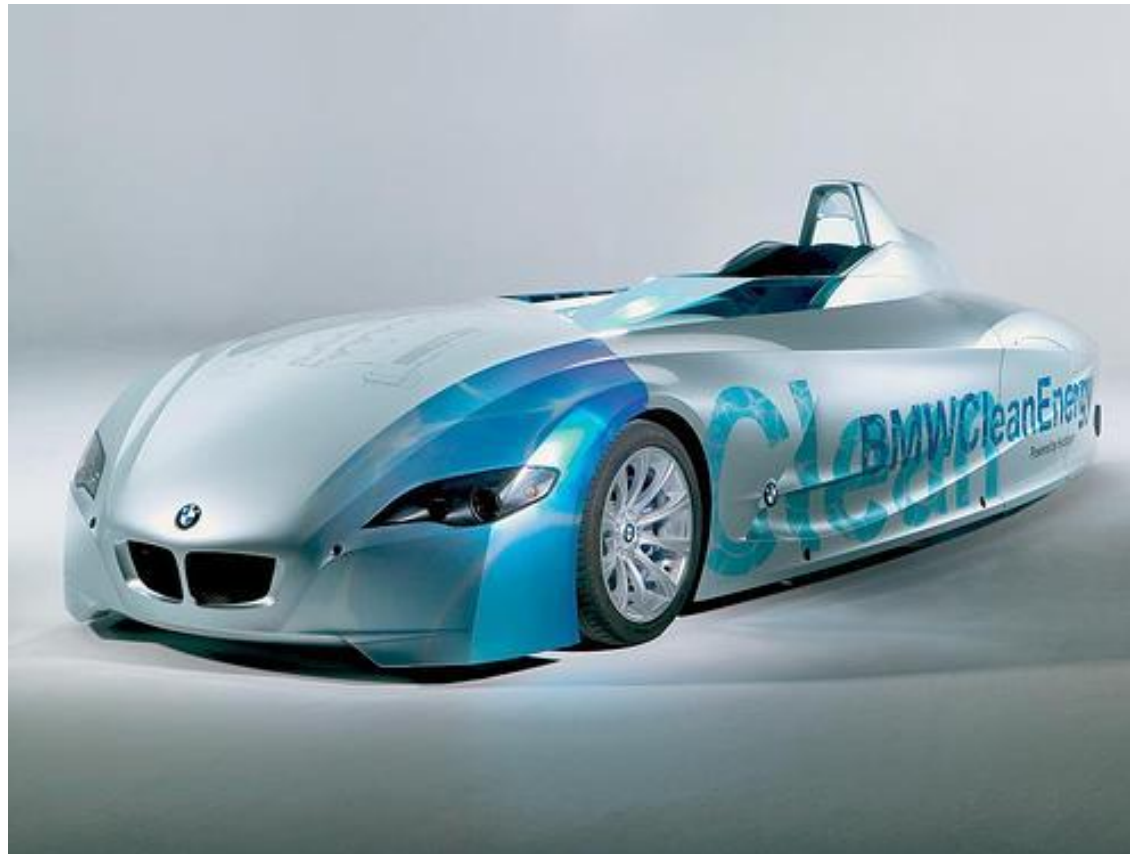
## Design-work of Wheel/Tire concepts, supported by the government as ZIM-Project in 2015



# HyRacer



Invention of the first Hydrogen driven model vehicle, the so-called HyRacer (2004 – 2007) in cooperation with BMW & Graupner



Source: Dynetek

IAA in 2005

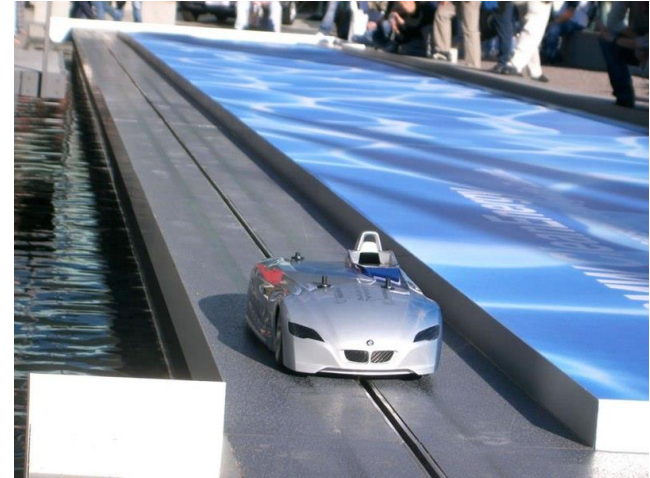


# HyRacer



**HYRACER**  
2

Smallest Hydrogen Vehicle of the world, Premiere IAA in 2005



*German Hydrogen  
Innovation Award  
2006*

*Guinness Book of  
Record attempt 2005,  
IAA 2009*

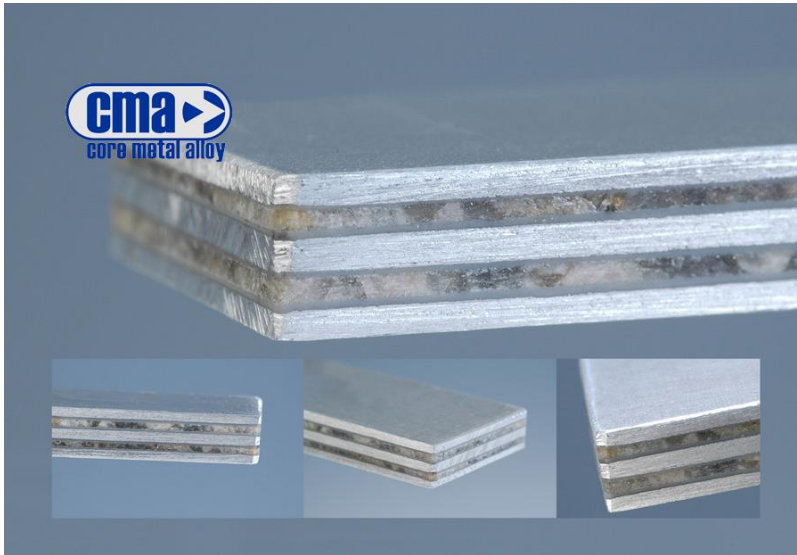


Worldwide more than 25 costumers: RMIT, Japan, BMW

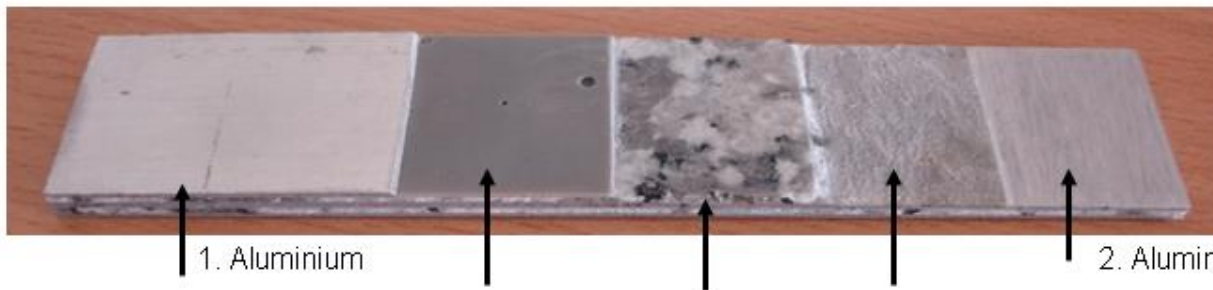
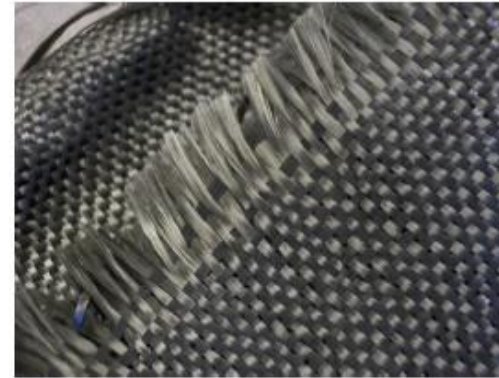
# Innovative Materials



## Natural Stone Laminate



## Basalt Fiber



**Bavaria Innovation Award:  
Cellular Materials**

# Chain Mail

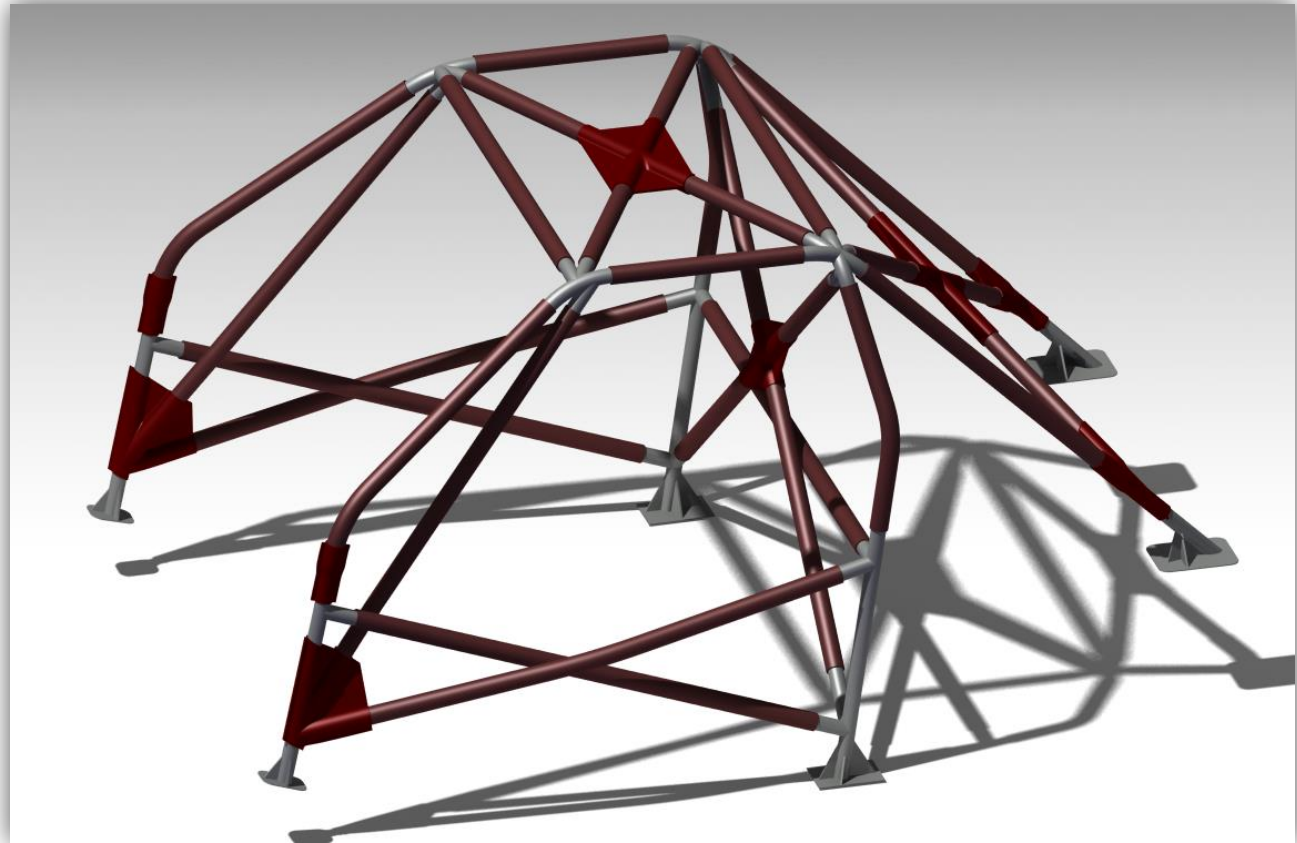
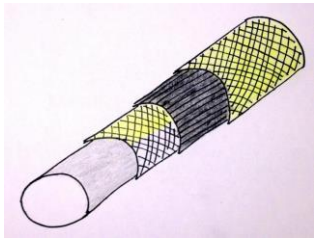


**Design, decoration as well as blasting protection with chain mail, Swarovski in Wattens, Tirol**

# Hybrid Composite Roll Cage



Design of a roll cage (Hybridversion), Composite-structure in 2015/2016



# Hydra Wellnitz Racing



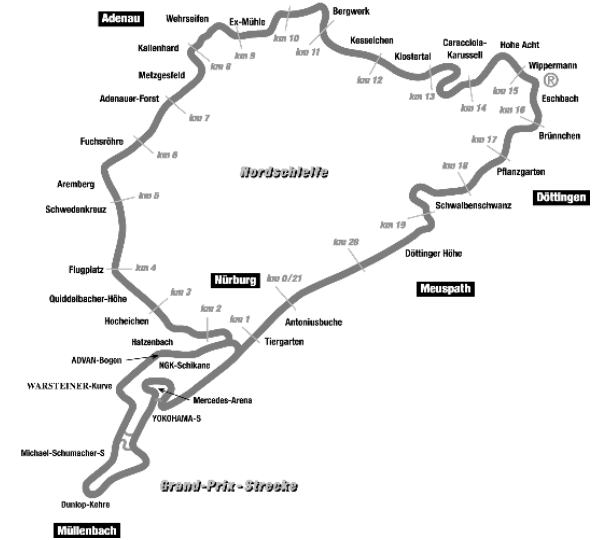
R&D of a hydrogen racing vehicle  
(since 2010)  
Racing operation with racing  
stable, Audi TT RS



**JÖRG VAN OMMEN**  
AUTOSPORT



# Motorsport/Racing



Participation in German Championships for long-distance racings (VLN) and the 24h Race at the Nürburgring, Germany



Development of exterior design for vehicle camouflage known as Erlkönig (Invention in 2007 – nowadays worldwide usage)

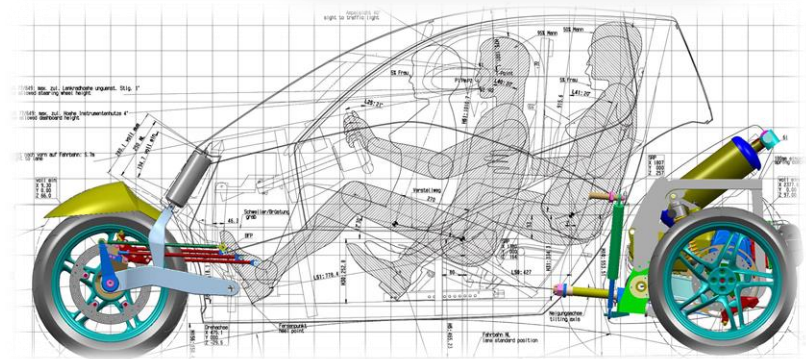


Application of the camouflage effects to textiles e.g. sports wear

# Design Speedster



Collaboration in the exterior and interior Design with the company PSW in the end of the project and further development of the Triton Tricycle







Design of Borbet wheel rims,  
Aluminium rims (2003-2006) in  
collaboration with the company  
Egg und Dart, Munich



# Design of A4 Model B7/B8



Model construction and interior design in close collaboration with the company AM Surf for loudspeaker of car doors and cockpits

# Design Accessoires



Design of FlexBeam and saddling  
for Bentley costumers, 2004-2006



# Design Safety Systems



**Design of Stockinger safe, exterior,  
Rotating mechanism for watches,  
burglary protection study**



# Design of Cybex baby carriages



**Cybex Baby Carriages,  
mounting mechanism for endurance tilting systems in vehicles**

# Design A4 – Navigation system



Design of the Pixel Graphic for the direction display, turning signals with color selection, platform independent coding's

# Lightweight Design Concepts for Deep-Orange project



**DEEP  
ORANGE**  
CLEMSON UNIVERSITY

**CUICAR**  
CLEMSON UNIVERSITY INTERNATIONAL CENTER FOR AUTOMOTIVE RESEARCH  
● Art Center College of Design



Lightweight design concepts in collaboration with the partner university Clemson University and the CU-ICAR (International Center for automotive research, SC, USA)

# University cooperation's



- Collaboration and consultation
- Collaboration in R&D





# Institute-partners and costumers/references



bertrandt

**Graupner**

Consulting in den Bereichen  
Materialwissenschaften und  
Finite-Elemente-Simulation **MATFEM**



PROCHAIN  
ARTUS-SYSTEMS

**faurecia**



FRIEDRICH MÜNCH



**MAGNA STEYR**



**HONDA**  
The Power of Dreams



# Institute-Partner/direct cooperation's



Following partners work with us in the area of Design, Packaging and Model construction

